



DRV 724 • DRV 725
Type A (DN 15 - DN 32)



DRV 724 • DRV 725
Type B (DN 40 - DN 50)



Media

The pressure reducers are suitable for use with aggressive waters and other aggressive liquids, but can also be used for air and neutral gases when larger flow rates are required.

Pressure reducing valve Female thread • High pressure Stainless steel

Pressure reducing valves of the series are piston-controlled, spring-loaded pressure reducing valves. These valves are inlet pressure relieved.

DGRL 2014/68/EU



Classification societies

- DNV GL
- LR
- BV
- ABS
- CCS

Customs tariff number

84811005



Features

- pressure-relieved single seated valve
- piston-controlled
- continuously adjustable outlet pressure
- max. inlet pressure up to 40 bar
- outlet pressure: 1,5 - 20 bar
- female thread acc. ISO 228, optionally with NPT-thread
- with integrated strainer filter
- replaceable inner parts
- double-ended G 1/4" manometer fitting (for outlet pressure)
- assembly position: any desired, preferably vertical
- minimum pressure difference (inlet/outlet pressure): 1 bar

Pressures



max. 40 bar



1,5 - 20 bar

Connections



Female thread
acc. ISO 228
from G 1/2" up to G 2"

Materials

	body	spring bonnet	seals	wetted inner parts	max. temperature
standard version	stainless steel 1.4408	stainless steel 1.4408	EPDM*, FKM, NBR	stainless steel 1.4404	190 °C**



Temperatures

Various options in the area of seals and wetted inner parts allow a maximum temperature of up to 190 °C.



from -30 °C up to +190 °C

Seals and temperatures

NBR	-15 °C to +100 °C
EPDM*	-30 °C to +130 °C
FKM	-10 °C to +190 °C

*only DN 40 & DN 50
**with FKM seals



Technical data

nominal size	15	20	25	32	40	50
G	1/2"	3/4"	1"	1 1/4"	1 1/2"	2"

Type

A

B

Pressures

max. inlet pressure [bar]

max. 40 bar



DRV 724

40

40

DRV 725

40

40

outlet pressure [bar]

1,5 - 10 bar



DRV 724

1,5 - 12

1,5 - 12

DRV 725

2,0 - 20

2,0 - 20

Connections

Female thread
from G 1/2" to G 2"



dimensions [mm]

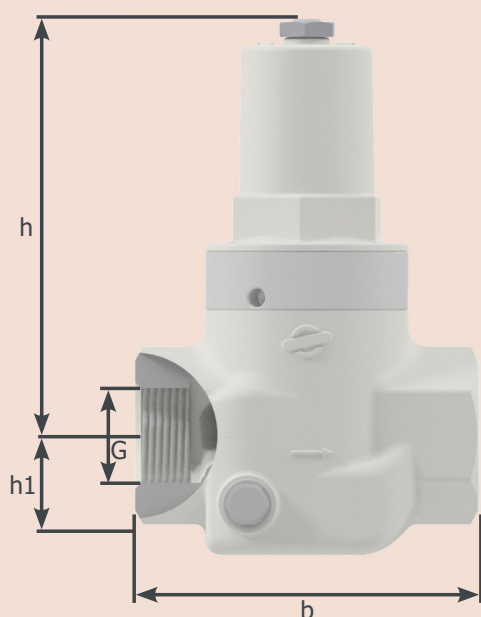
	G	1/2"	3/4"	1"	1 1/4"	1 1/2"	2"
	b	95	95	110	120	150	160
all types	h1	29	29	38	38	38	38
	h	133	133	133	133	243	243

weight [kg]

DRV 724	1,7	1,6	2,5	2,5	6,8	6,6
DRV 725	1,7	1,7	2,6	2,5	6,8	6,7

kvs-value [m³/h]

all types	2,9	3,9	5,4	6,1	9	13
-----------	-----	-----	-----	-----	---	----





Article number

nominal size	15	20	25	32	40	50
G	1/2"	3/4"	1"	1 1/4"	1 1/2"	2"

standard version

DRV 724	072402	072403	072404	072405	072406	072407
DRV 725	072502	072503	072504	072505	072506	072507

Standard article numbers are 6 digits, article numbers for additional options are 11 digits. (See option overview and configuration example)

Options

CC - connections

- 00 - ISO 228
- 30 - NPT - ASME B1.20.1

M - material of wetted inner parts

- 0 - stainless steel 1.4404

E - elastomers

- 0 - FKM
 - 1 - NBR
 - 2 - EPDM
- only DN 40 & DN 50

F - finishes

- 0 - without additional finishes

Configuration example of an article number with additional options

inlet pressure: 25 bar
seals: EPDM

outlet pressure: 14 bar
temperature: 30 °C

connection: 2" NPT
without additional finishes

art.no. standard version						-	C	C	M	E	F
0	7	2	5	0	7	-	3	0	0	2	0

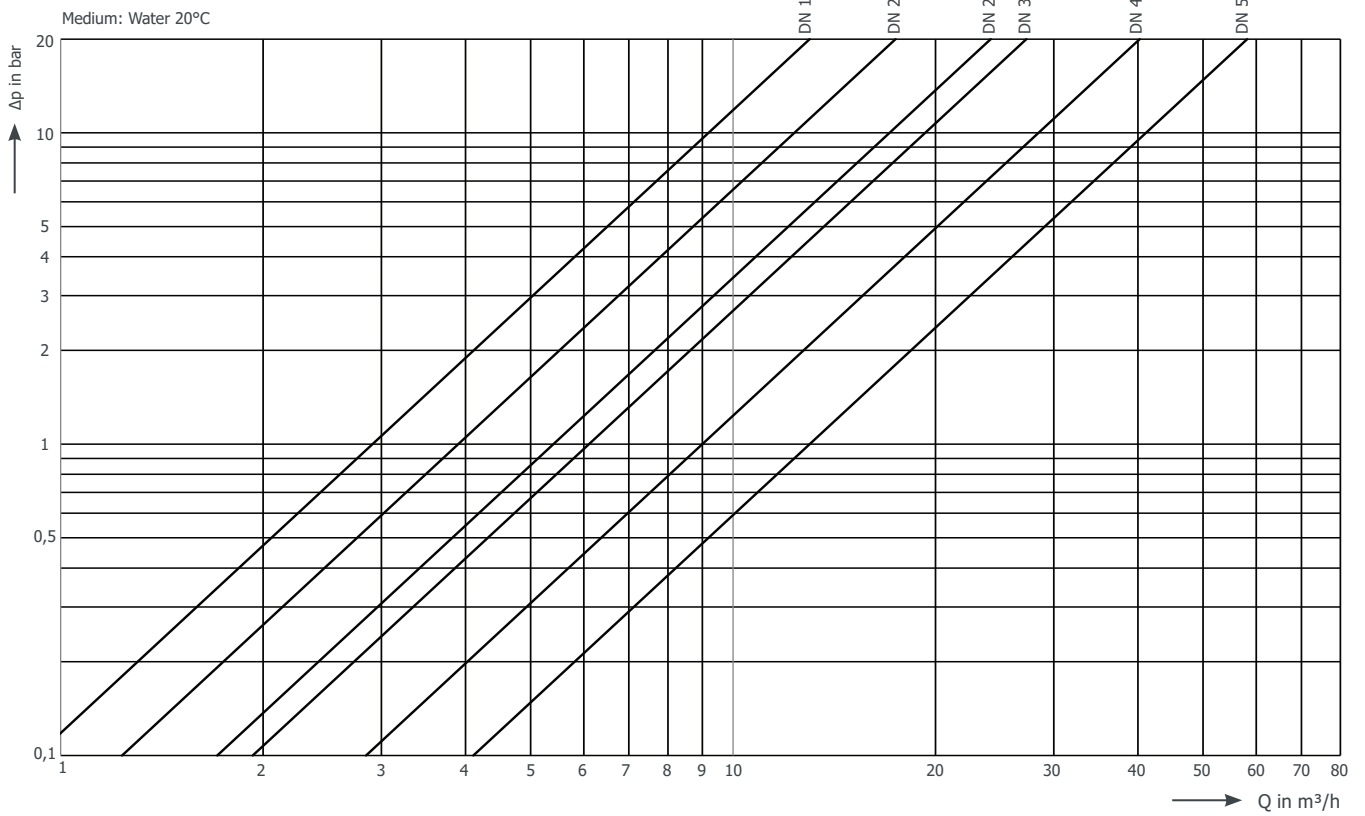
Manometer

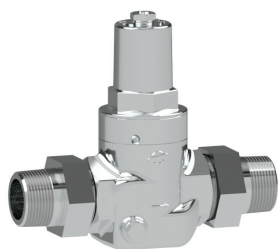
diameter	connection	body	pressure range	max. temp.	art.no.*
63 mm	G 1/4", central back	stainless steel	0 - 10 bar	190 °C**	009014
63 mm	G 1/4", central back	stainless steel	0 - 20 bar	190 °C**	009017

*article numbers are 11 digits, see option overview and configuration example
**with FKM seals

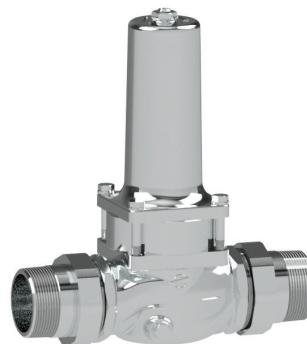


Flow diagram





DRV 724-R • DRV 725-R
Type A (DN 15 - DN 32)



DRV 724-R • DRV 725-R
Type B (DN 40 - DN 50)



Media

The pressure reducers are suitable for use with aggressive waters and other aggressive liquids, but can also be used for air and neutral gases when larger flow rates are required.

Pressure reducing valve Male thread • High pressure Stainless steel

Pressure reducing valves of the series are piston-controlled, spring-loaded pressure reducing valves. These valves are inlet pressure relieved.

DGRL 2014/68/EU



Classification societies

- DNV GL
- LR
- BV
- ABS
- CCS

Customs tariff number

84811005



Features

- pressure-relieved single seated valve
- piston-controlled
- continuously adjustable outlet pressure
- max. inlet pressure up to 40 bar
- outlet pressure: 1,5 - 20 bar
- male thread acc. ISO 7
- with integrated strainer filter
- replaceable inner parts
- double-ended G 1/4" manometer fitting (for outlet pressure)
- assembly position: any desired, preferably vertical
- minimum pressure difference (inlet/outlet pressure): 1 bar

Pressures



max. 40 bar



1,5 - 20 bar

Connections



Male thread
acc. ISO 7
from R 1/2" up to R 2"

Materials

	body	spring bonnet	seals	wetted inner parts	max. temperature
standard version	stainless steel 1.4408	stainless steel 1.4408	EPDM*, FKM, NBR	stainless steel 1.4404	190 °C**



Temperatures

Various options in the area of seals and wetted inner parts allow a maximum temperature of up to 190 °C.



from -30 °C up to +190 °C

Seals and temperatures

NBR	-15 °C to +100 °C
EPDM*	-30 °C to +130 °C
FKM	-10 °C to +190 °C



Technical data

nominal size	15	20	25	32	40	50
R	1/2"	3/4"	1"	1 1/4"	1 1/2"	2"

Type

A

B

Pressures

max. inlet pressure [bar]

max. 40 bar



DRV 724-R

40

40

DRV 725-R

40

40

outlet pressure [bar]

1,5 - 10 bar



DRV 724-R

1,5 - 12

1,5 - 12

DRV 725-R

2,0 - 20

2,0 - 20

Connections

Male thread
from R 1/2" to R 2"



dimensions [mm]

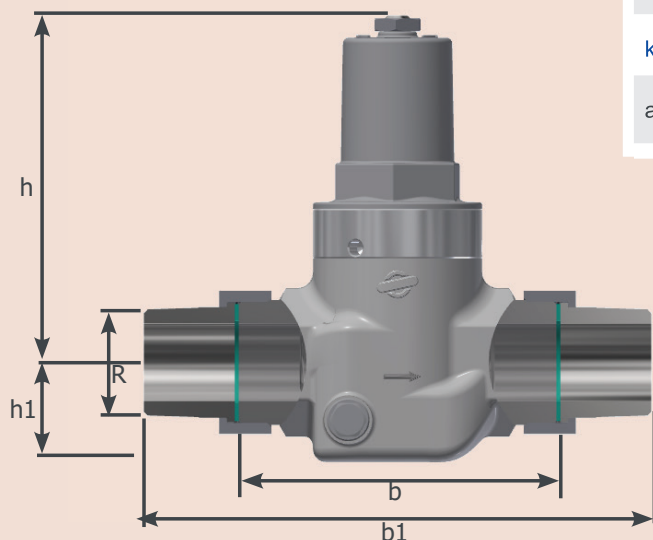
	R	1/2"	3/4"	1"	1 1/4"	1 1/2"	2"
	b	105	105	122	122	160	160
all types	b1	168	168	195	195	250	250
	h1	29	29	38	38	39	39
	h	133	133	133	133	243	243

weight [kg]

DRV 724-R	1,9	1,9	3,2	3,3	8,0	7,9
DRV 725-R	2,0	2,0	3,3	3,3	8,0	8,0

kvs-value [m³/h]

all types	2,9	3,9	5,4	6,1	9	13
-----------	-----	-----	-----	-----	---	----





Article number

nominal size	15	20	25	32	40	50
R	1/2"	3/4"	1"	1 1/4"	1 1/2"	2"

standard version

DRV 724-R	072402-R0XXX	072403-R0XXX	072404-R0XXX	072405-R0XXX	072406-R0XXX	072407-R0XXX
DRV 725-R	072502-R0XXX	072503-R0XXX	072504-R0XXX	072505-R0XXX	072506-R0XXX	072507-R0XXX

Article numbers are 11 digits. (See option overview and configuration example)

Options

CC - connections

R0 - ISO 7

M - material of wetted inner parts (selectable range)

3 - stainless steel 1.4404
9 - stainless steel 1.4404
(Complete valve)

E - elastomers (selectable range)

3 - FKM
1 - NBR
2 - EPDM only DN 40 & DN 50

F - finishes

0 - without additional finishes

Configuration example of an article number with additional options

inlet pressure: 25 bar
seals: FKM

outlet pressure: 5 bar
temperature: 30 °C

connection: 2" ISO 7
without additional finishes

art.no. standard version											
							C	C	M	E	F
0	7	2	5	0	7	-	R	0	3	3	0

Manometer

diameter	connection	body	pressure range	max. temp.	art.no.*
63 mm	G 1/4", central back	stainless steel	0 - 10 bar	190 °C**	009014
63 mm	G 1/4", central back	stainless steel	0 - 20 bar	190 °C**	009017

*article numbers are 11 digits, see option overview and configuration example
**with FKM seals



Flow diagram

